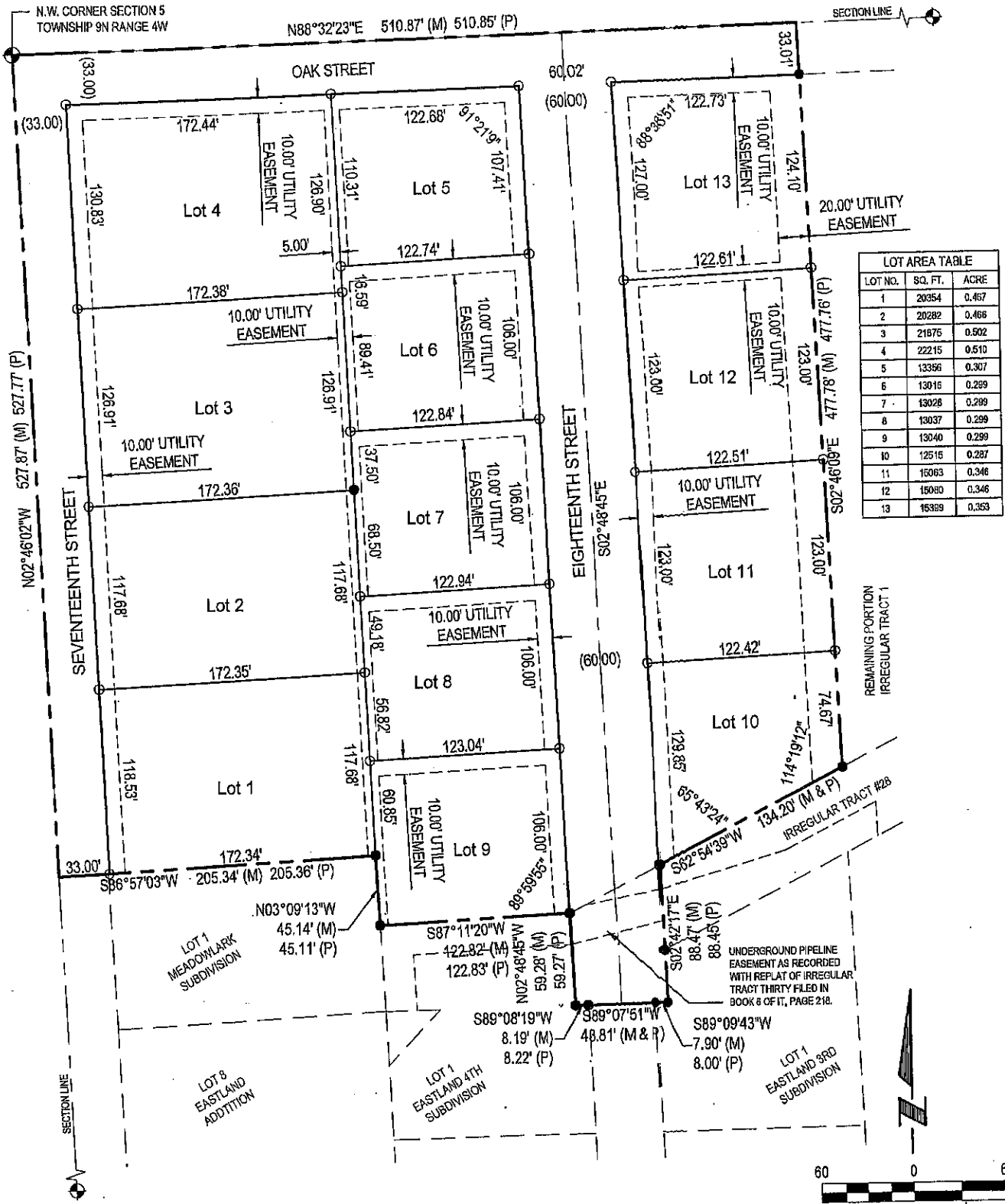
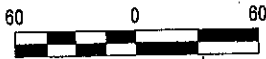


PROVIDENCE SUBDIVISION

Located in the Northwest Quarter of the Northwest Quarter Section Five (5), Township Nine (9) North, Range Four (4) West of the Sixth Principal Meridian (6th P.M.), City of Henderson, York County, Nebraska.



LOT AREA TABLE		
LOT NO.	SQ. FT.	ACRE
1	20354	0.467
2	20282	0.466
3	21876	0.502
4	22215	0.510
5	13356	0.307
6	13016	0.299
7	13028	0.299
8	13037	0.299
9	13040	0.299
10	12516	0.287
11	15063	0.346
12	15080	0.346
13	16389	0.373



REVIEW BY THE YORK COUNTY SURVEYOR
 THE PLAT OF PROVIDENCE SUBDIVISION WAS REVIEWED BY THE OFFICE OF THE YORK COUNTY SURVEYOR ON THIS _____ DAY OF _____, 2014.

ACCEPTANCE BY THE YORK COUNTY REGISTER OF DEEDS
 THE PLAT OF PROVIDENCE SUBDIVISION WAS RECORDED ON THIS _____ DAY OF _____, 2014, AT BOOK# _____, PAGE# _____

YORK COUNTY SURVEYOR (SEAL)

YORK COUNTY REGISTER OF DEEDS (SEAL)

